

# Airport Fulfillment Center

3120 S. Martin Street | East Point, GA 30344



## INDUSTRIAL SPACE FOR LEASE

### Available Space:

- ▶ Suite 800:
  - ±4,759 SF
  - ±1,614 SF Office
  - 1 Dock High Door
- ▶ Clear Height: 20'

### Property Features:

- ▶ Building Type: Brick
- ▶ Zoning: Light Industrial
- ▶ Potential Outside Storage

Owned & Managed By:



1600 NORTHSIDE DRIVE NW  
Suite 100  
ATLANTA, GA 30318  
404.352.1882  
WHNRE.COM

Joseph Rogers | Partner  
C: 404.550.0817  
jrogers@whnre.com

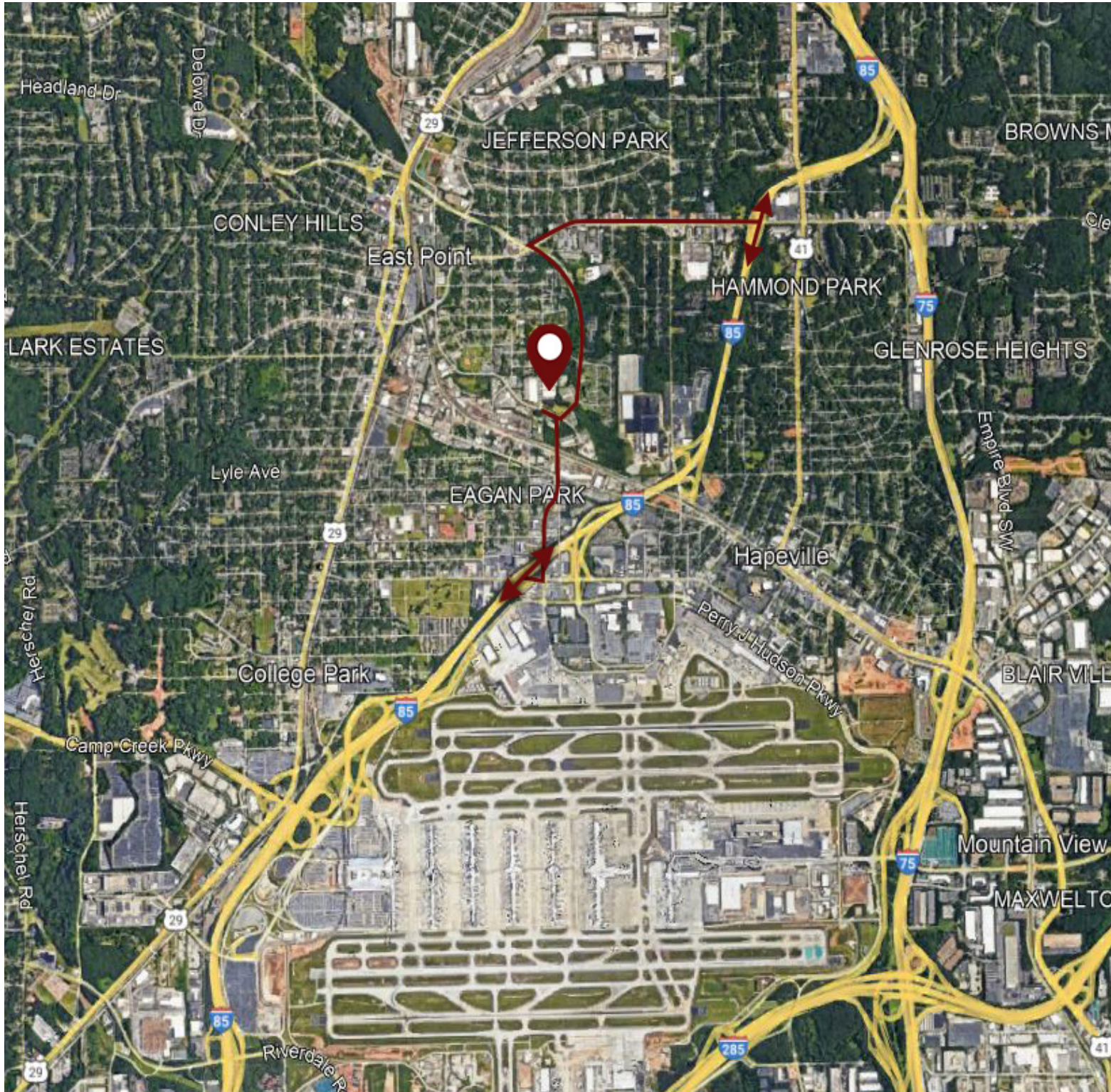
Matt Sirockman | Associate  
C: 404.202.2222  
msirockman@whnre.com

Every effort has been made to provide accurate information, but no liability is assumed for errors or omissions.



# Airport Fulfillment Center

## 3120 S. Martin Street | East Point, GA 30344



1600 NORTHSIDE DRIVE NW  
Suite 100  
ATLANTA, GA 30318  
404.352.1882  
WHNRE.COM

Joseph Rogers | Partner  
C: 404.550.0817  
jrogers@whnre.com

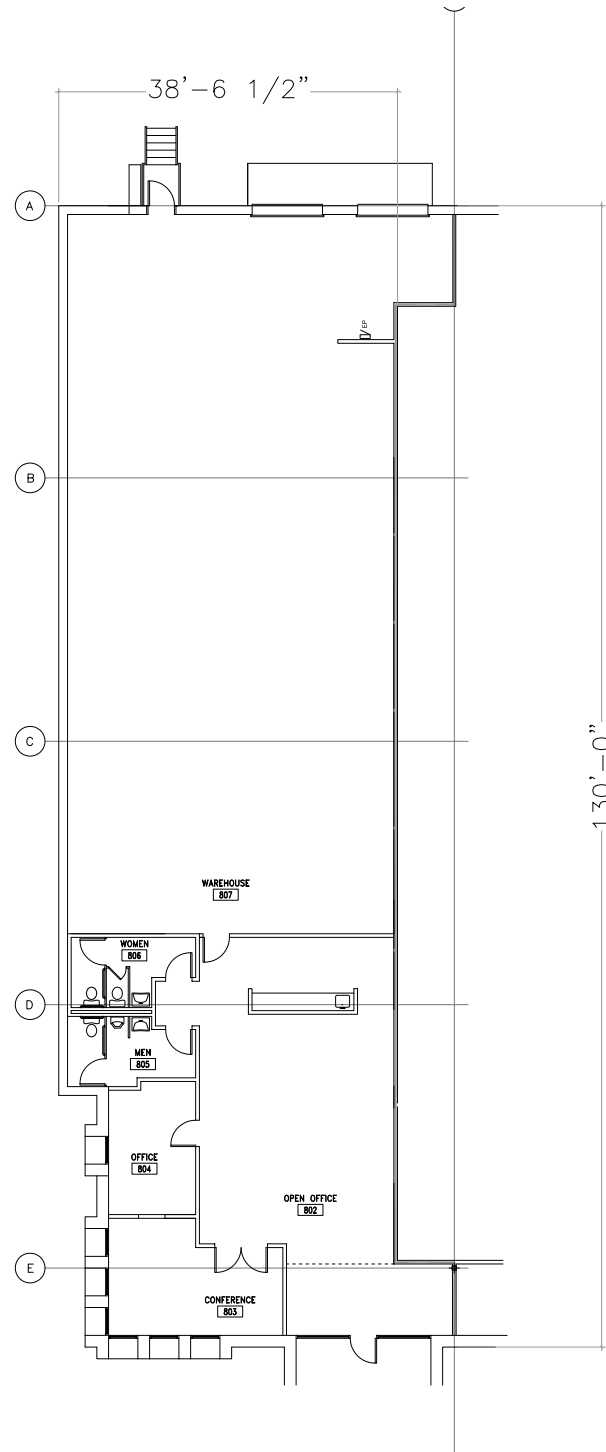
Matt Sirockman | Associate  
C: 404.202.2222  
msirockman@whnre.com

Every effort has been made to provide accurate information, but no liability is assumed for errors or omissions.



# Airport Fulfillment Center

3120 S. Martin Street | East Point, GA 30344



1600 NORTHSIDE DRIVE NW  
Suite 100  
ATLANTA, GA 30318  
404.352.1882  
WHNRE.COM

Joseph Rogers | Partner  
C: 404.550.0817  
jrogers@whnre.com

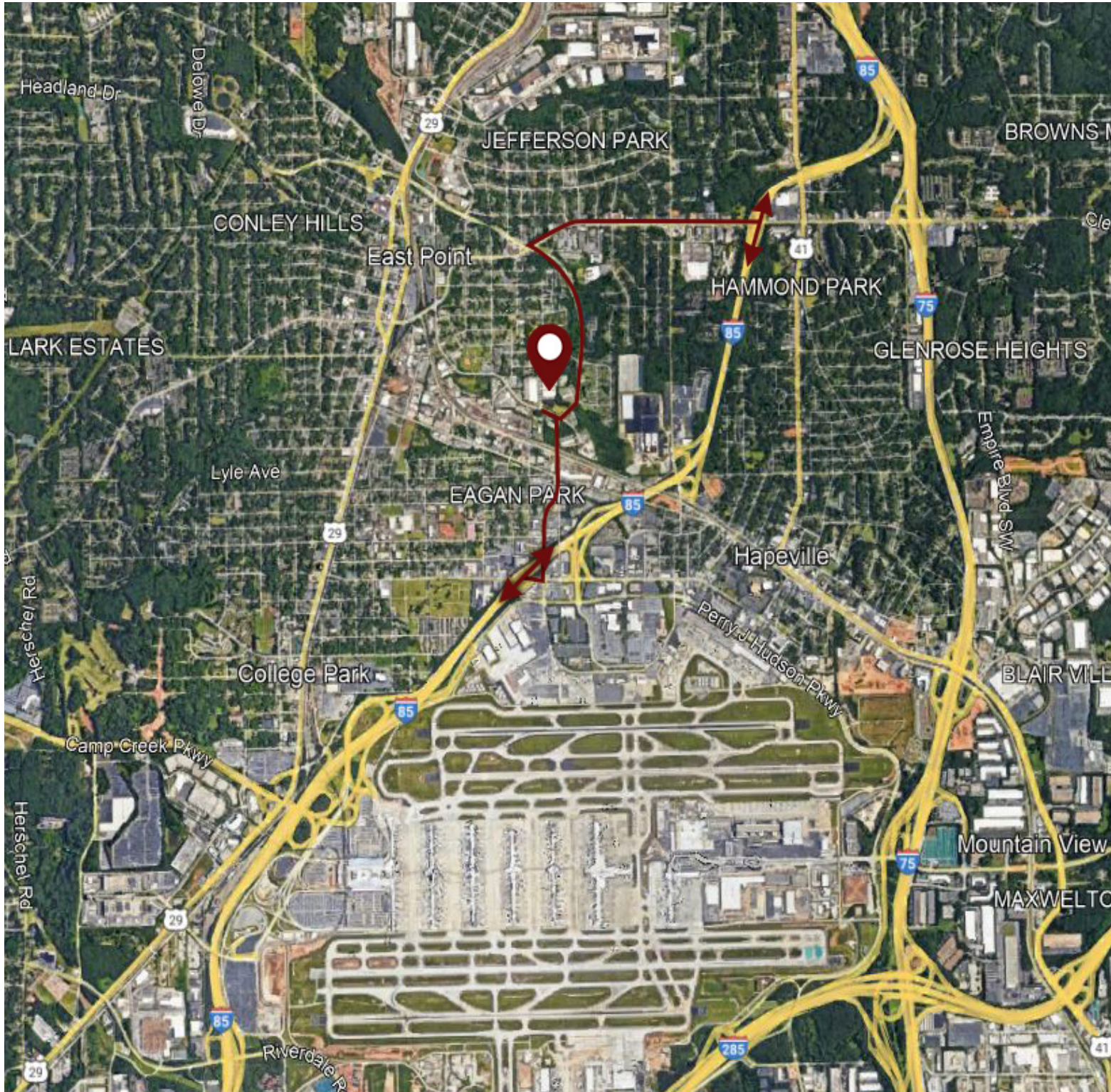
Matt Sirockman | Associate  
C: 404.202.2222  
msirockman@whnre.com

Every effort has been made to provide accurate information, but no liability is assumed for errors or omissions.



# Airport Fulfillment Center

## 3120 S. Martin Street | East Point, GA 30344



**WILSON  
HULL  
& NEAL**  
REAL ESTATE, LLC

1600 NORTHSIDE DRIVE NW  
Suite 100  
ATLANTA, GA 30318  
404.352.1882  
WHNRE.COM

Joseph Rogers | Partner  
C: 404.550.0817  
jrogers@whnre.com

Matt Sirockman | Associate  
C: 404.202.2222  
msirockman@whnre.com

Every effort has been made to provide accurate information, but no liability is assumed for errors or omissions.



# Airport Fulfillment Center

3120 S. Martin Street | East Point, GA 30344



## INDUSTRIAL SPACE FOR LEASE

### Available Space:

- ▶ Suite 100:
  - ± 5,092 SF
  - ± 800 SF Office
  - 1 Dock High Door
  - 1 Drive-In Door
- ▶ Clear Height: 20'

### Property Features:

- ▶ Building Type: Brick
- ▶ Zoning: Light Industrial
- ▶ Potential Outside Storage

Owned & Managed By:



1600 NORTHSIDE DRIVE NW  
Suite 100  
ATLANTA, GA 30318  
404.352.1882  
WHNRE.COM

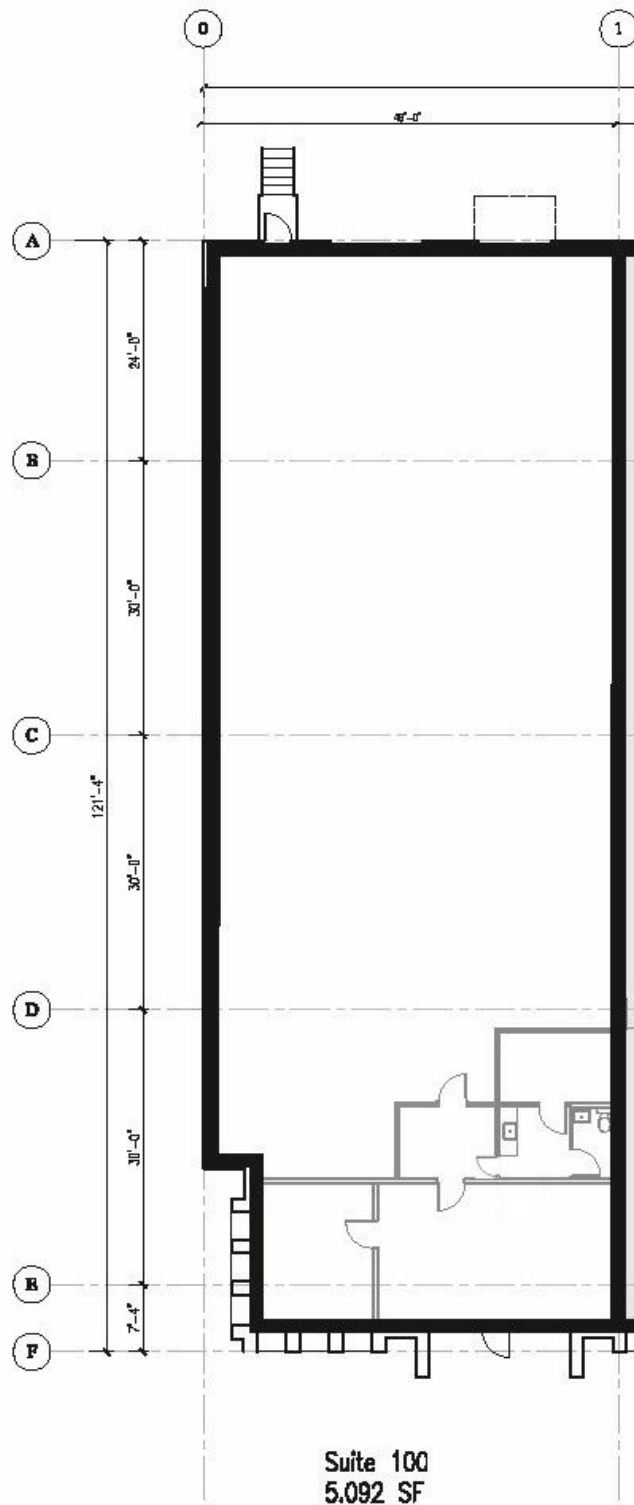
Joseph Rogers | Partner  
C: 404.550.0817  
jrogers@whnre.com

Matt Sirockman | Associate  
C: 404.202.2222  
msirockman@whnre.com

Every effort has been made to provide accurate information, but no liability is assumed for errors or omissions.

# Airport Fulfillment Center

3120 S. Martin Street | East Point, GA 30344



1600 NORTHSIDE DRIVE NW  
Suite 100  
ATLANTA, GA 30318  
404.352.1882  
WHNRE.COM

Joseph Rogers | Partner  
C: 404.550.0817  
jrogers@whnre.com

Matt Sirockman | Associate  
C: 404.202.2222  
msirockman@whnre.com

Every effort has been made to provide accurate information, but no liability is assumed for errors or omissions.



# Airport Fulfillment Center

## 3130 S. Martin St. | East Point, GA 30344



## INDUSTRIAL SPACE FOR LEASE

### Available Space:

- ▶ Suite 600:
  - ± 7,232 SF
  - ± 1,784 SF Office
  - 2 Dock Highs
- ▶ Clear Height: 20'

### Property Features:

- ▶ Truck Court: ± 120' Deep
- ▶ Building Type: Brick
- ▶ Zoning: C-1 (Neighborhood Commercial)
- ▶ Potential Outside Storage

Owned & Managed By:

**Dalfen**  
INDUSTRIAL

**WILSON  
HULL  
& NEAL**  
REAL ESTATE, LLC

1600 NORTHSIDE DRIVE NW  
Suite 100  
ATLANTA, GA 30318  
404.352.1882  
WHNRE.COM

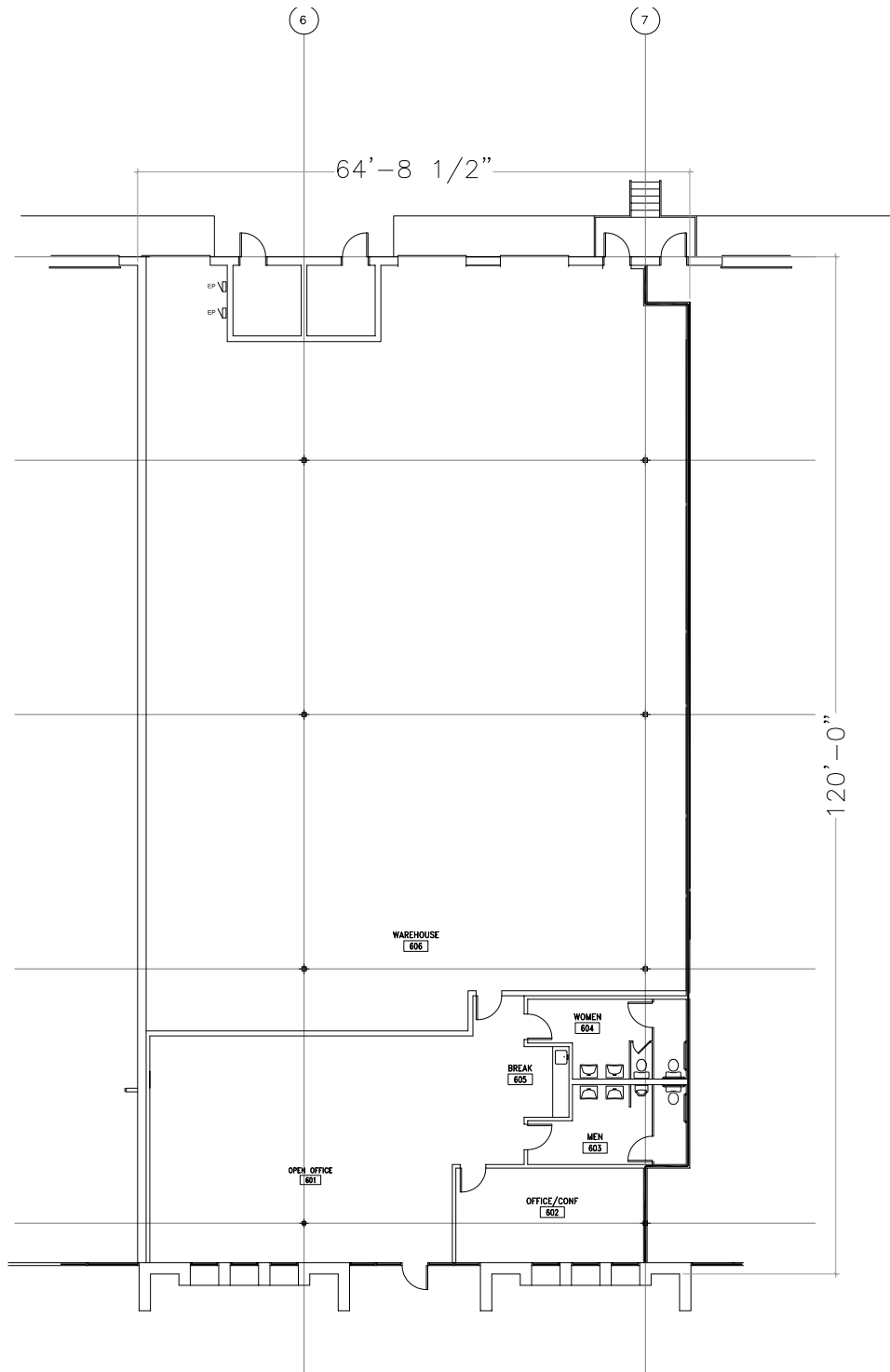
Joseph Rogers | Partner  
C: 404.550.0817  
jrogers@whnre.com

Matt Sirockman | Associate  
C: 404.202.2222  
msirockman@whnre.com

Every effort has been made to provide accurate information, but no liability is assumed for errors or omissions.

# Airport Fulfillment Center

3130 S. Martin St. | East Point, GA 30344



1600 NORTHSIDE DRIVE NW  
Suite 100  
ATLANTA, GA 30318  
404.352.1882  
WHNRE.COM

Joseph Rogers | Partner  
C: 404.550.0817  
jrogers@whnre.com

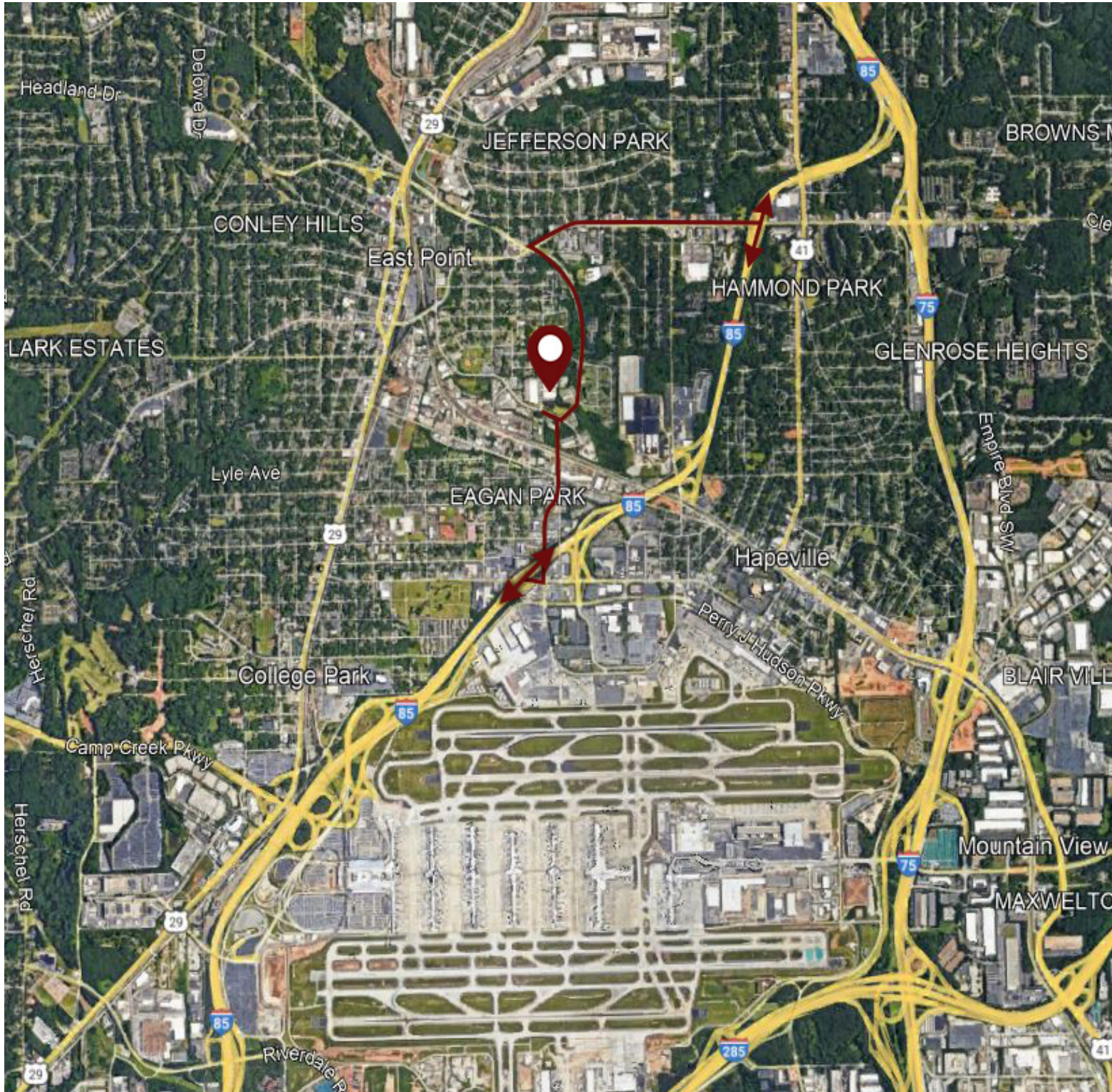
Matt Sirockman | Associate  
C: 404.202.2222  
msirockman@whnre.com

Every effort has been made to provide accurate information, but no liability is assumed for errors or omissions.



# Airport Fulfillment Center

3130 S. Martin St. | East Point, GA 30344



1600 NORTHSIDE DRIVE NW  
Suite 100  
ATLANTA, GA 30318  
404.352.1882  
WHNRE.COM

Joseph Rogers | Partner  
C: 404.550.0817  
jrogers@whnre.com

Matt Sirockman | Associate  
C: 404.202.2222  
msirockman@whnre.com

Every effort has been made to provide accurate information, but no liability is assumed for errors or omissions.