



For Lease

±25,200 Square Feet with ±6,987 Square Feet of Cooler

2332 Station Drive

Stockton, CA 95215 | Stockton Supply Chain Center II

Mike Goldstein, SIOR

Vice Chair - Executive Managing Director
CA License No. 01319234
michael.goldstein@colliers.com
+1 209 475 5106

Ryan McShane, SIOR

Vice Chair
CA License No. 01295796
ryan.mcshane@colliers.com
+1 209 475 5105

Alex Hoeck, SIOR

Executive Vice President
CA License No. 01943853
alex.hoeck@colliers.com
+1 209 475 5107

Dalfen
INDUSTRIAL



Accelerating success.

PROPERTY SPECIFICATIONS

2332 Station Drive

Stockton, CA 95215 | Stockton Supply Chain Center II

Colliers

Available SF	±25,200 SF
Office SF	±2,100 SF with 8 private offices, 2 restrooms, reception & kitchen
Dock Doors	7
Dock Equipment	Seals, pit levelers & bumpers
Grade Level Doors	2
Clear Height	±22' - 23'
Column Spacing	23.5' x 41.5'

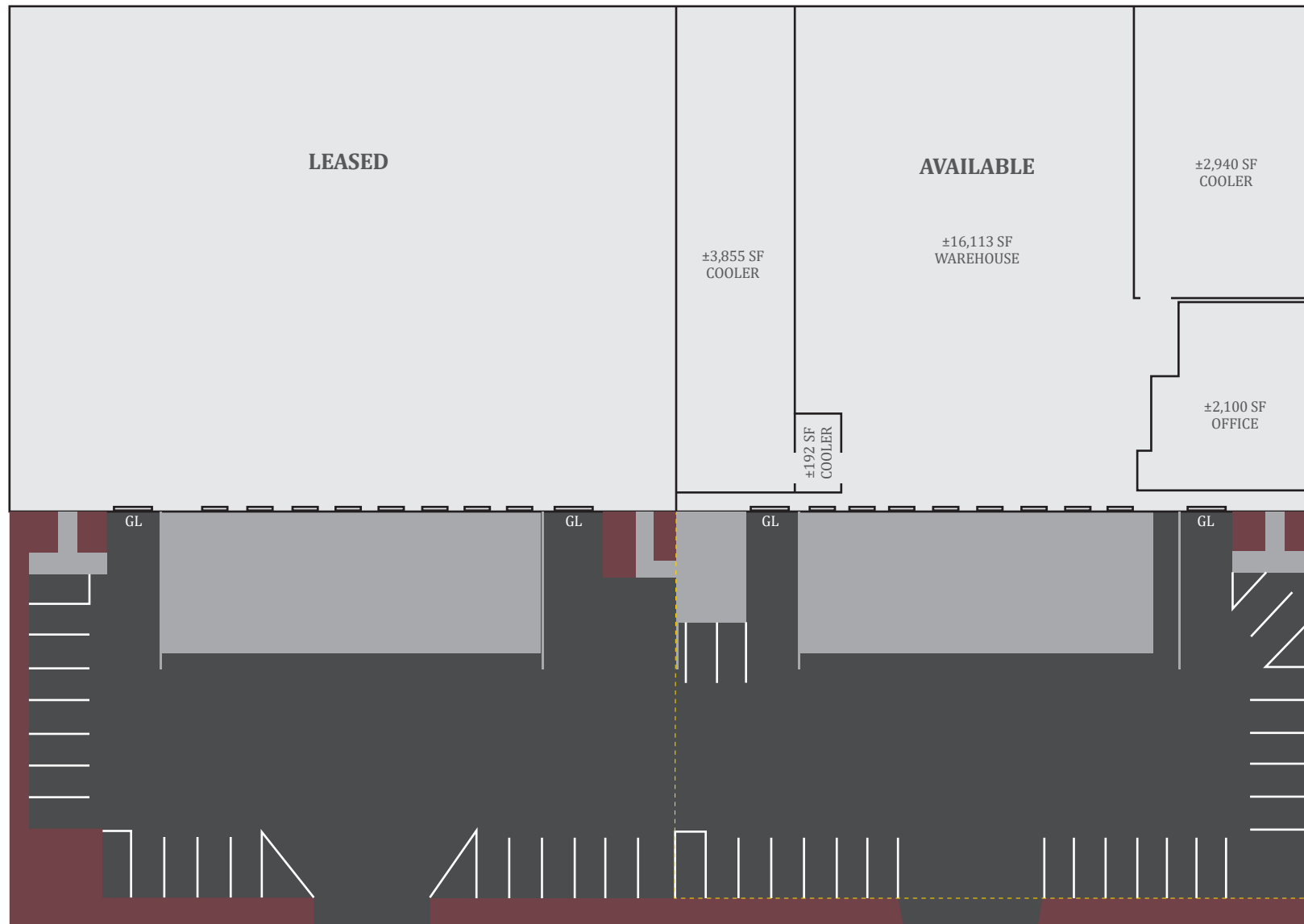
Auto Parking	22 stalls
Skylights	Yes
Lighting	Fluorescent & LED
Truck Court	±100' (fenced & secured)
Fire Suppression	Sprinklers
Cooler	Cooler #1 - 2,940 SF Cooler #2 - 3,855 SF Cooler #3 - 192 SF



Accelerating success.

2332 Station Drive

Stockton, CA 95215 | Stockton Supply Chain Center II



HWY 99 ACCESS

Colliers

2332 Station Drive

Stockton, CA 95215 | Stockton Supply Chain Center II



STAGECOACH ROAD

FARMINGTON ROAD

STATION DRIVE

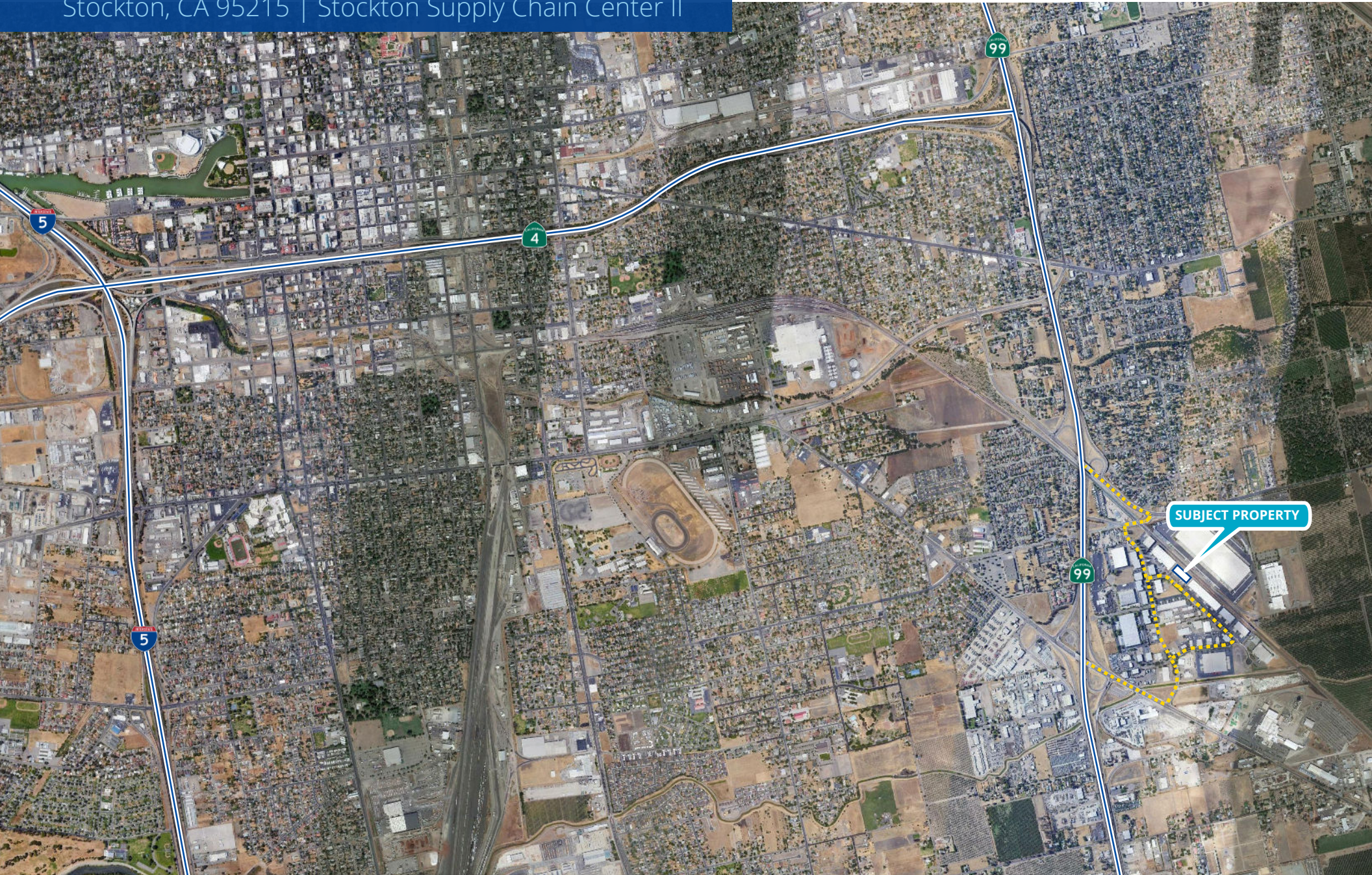
AVAILABLE

LOCATION AERIAL

Colliers

2332 Station Drive

Stockton, CA 95215 | Stockton Supply Chain Center II





3439 Brookside Road, Suite 108
Stockton, CA 95219
P: +1 209 475 5100
F: +1 209 475 5102
colliers.com

Mike Goldstein, SIOR

Vice Chair - Executive Managing Director
CA License No. 01319234
michael.goldstein@colliers.com
+1 209 475 5106

Ryan McShane, SIOR

Vice Chair
CA License No. 01295796
ryan.mcshane@colliers.com
+1 209 475 5105

Alex Hoeck, SIOR

Executive Vice President
CA License No. 01943853
alex.hoeck@colliers.com
+1 209 475 5107

