

GOLDEN GLADES FULFILLMENT CENTER

15600 NW 15TH AVE, SUITE C | MIAMI, FL 33166

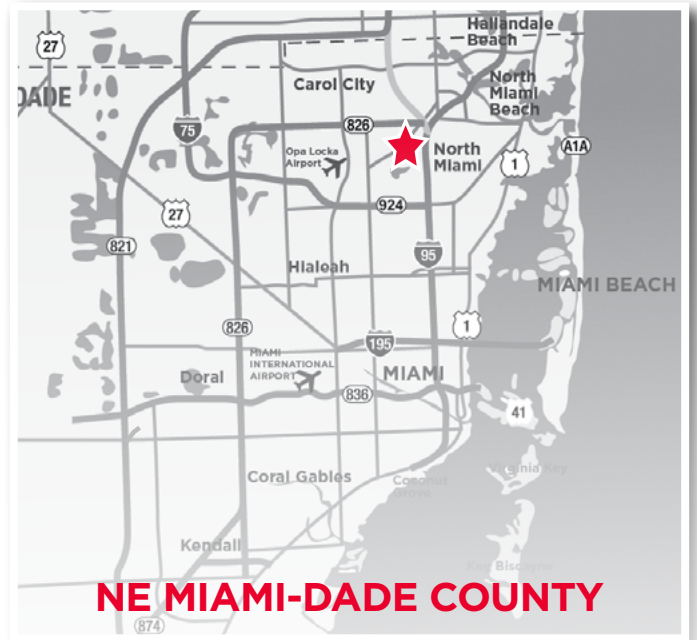
6% CO-OP BROKER FEE OFFERED THROUGH 12/31/2020



Located within Sunshine State Industrial Park in Miami Gardens, Golden Glades Fulfillment Center (GGFC) is adjoined to the Golden Glades Interchange, where four critical South Florida highways converge, providing tenants of GGFC with unparalleled access to the dense population of South Florida. The ±201,491 SF multi-tenant building sits on roughly 10.25 acres in the heart of the in the North Central Miami-Dade submarket.

Office/Flex Vacancy Specifications

- ±9,891 SF available for lease
- ±7,360 SF of office space
- ±2,531 SF of warehouse
- 10'x10' street-level loading door
- ASKING LEASE RATE \$13.00 NNN



GOLDEN GLADES FULFILLMENT CENTER

15600 NW 15TH AVE, SUITE C | MIAMI, FL 33166

IMAGE GALLERY

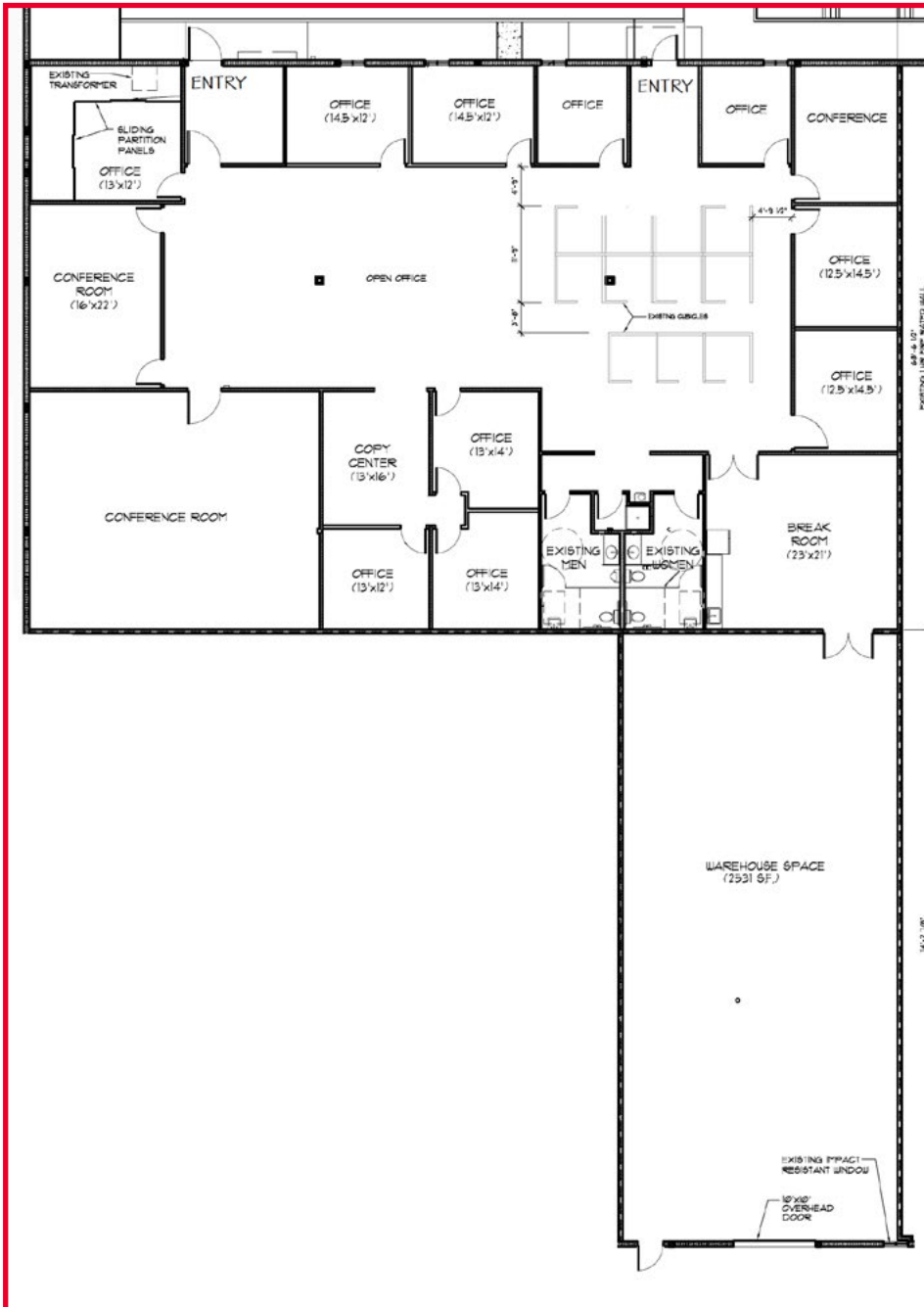


©2020 Cushman & Wakefield. All rights reserved. The information contained in this communication is strictly confidential. This information has been obtained from sources believed to be reliable but has not been verified. NO WARRANTY OR REPRESENTATION, EXPRESS OR IMPLIED, IS MADE AS TO THE CONDITION OF THE PROPERTY (OR PROPERTIES) REFERENCED HEREIN OR AS TO THE ACCURACY OR COMPLETENESS OF THE INFORMATION CONTAINED HEREIN, AND SAME IS SUBMITTED SUBJECT TO ERRORS, OMISSIONS, CHANGE OF PRICE, RENTAL OR OTHER CONDITIONS, WITHDRAWAL WITHOUT NOTICE, AND TO ANY SPECIAL LISTING CONDITIONS IMPOSED BY THE PROPERTY OWNER(S). ANY PROJECTIONS, OPINIONS OR ESTIMATES ARE SUBJECT TO UNCERTAINTY AND DO NOT SIGNIFY CURRENT OR FUTURE PROPERTY PERFORMANCE.

GOLDEN GLADES FULFILLMENT CENTER

15600 NW 15TH AVE, SUITE C | MIAMI, FL 33166

FLOOR PLAN +9,891 SF OF OFFICE/FLEX SPACE



PYLON SIGNAGE AVAILABLE

GIAN RODRIGUEZ
 Managing Principal
 +1 305 351 2452
 gian.rodriquez@cushwake.com

WAYNE RAMOSKI
 Executive Director
 +1 305 533 2840
 wayne.amoski@cushwake.com

SKYLAR STEIN
 Senior Associate
 +1 305 533 2867
 skylar.stein@cushwake.com

NICOLE DIEZ
 Marketing Coordinator
 +1 786 792 5214
 nicole.diez@cushwake.com

©2020 Cushman & Wakefield. All rights reserved. The information contained in this communication is strictly confidential. This information has been obtained from sources believed to be reliable but has not been verified. NO WARRANTY OR REPRESENTATION, EXPRESS OR IMPLIED, IS MADE AS TO THE CONDITION OF THE PROPERTY (OR PROPERTIES) REFERENCED HEREIN OR AS TO THE ACCURACY OR COMPLETENESS OF THE INFORMATION CONTAINED HEREIN, AND SAME IS SUBMITTED SUBJECT TO ERRORS, OMISSIONS, CHANGE OF PRICE, RENTAL OR OTHER CONDITIONS, WITHDRAWAL WITHOUT NOTICE, AND TO ANY SPECIAL LISTING CONDITIONS IMPOSED BY THE PROPERTY OWNER(S). ANY PROJECTIONS, OPINIONS OR ESTIMATES ARE SUBJECT TO UNCERTAINTY AND DO NOT SIGNIFY CURRENT OR FUTURE PROPERTY PERFORMANCE.

