



# FAIRBANKS

## LOGISTICS PARK

**BUILDING 1 | ±258,204 SF**  
8702 FAIRBANKS N. HOUSTON RD.,  
HOUSTON, TX 7764



**FOR LEASING INFORMATION, CONTACT**

TYLER MANER | 817.877.1302 | [tmaner@streamrealty.com](mailto:tmaner@streamrealty.com)  
JEREMY LUMBRERAS, SIOR | 713.300.0322 | [jlumbreras@streamrealty.com](mailto:jlumbreras@streamrealty.com)  
GARRET GEACONE | 713.300.0232 | [garret.geacone@streamrealty.com](mailto:garret.geacone@streamrealty.com)





# FAIRBANKS LOGISTICS PARK

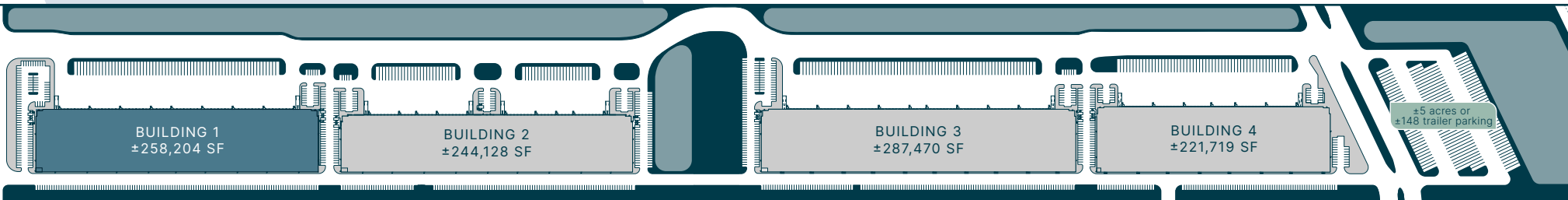
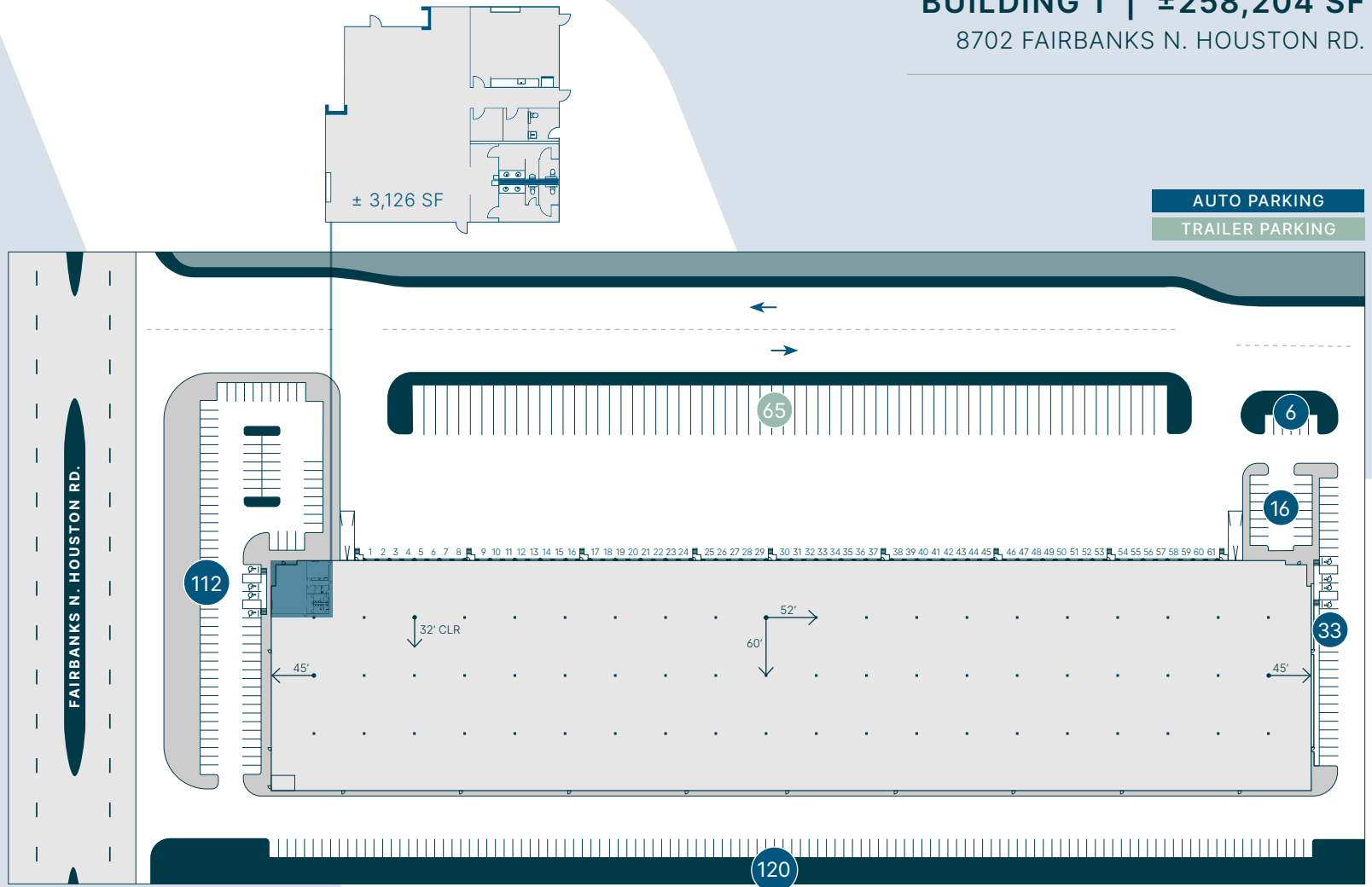
## Building Highlights

- ±258,204 SF available
- ±3,126 SF spec office
- Front-load configuration
- 32' clear height
- 60'x52' column spacing
- 60' speed bay
- 240' building depth
- 1,078' building length
- 180' truck court
- 61 dock-high doors (9'x10')
- 2 grade-level doors (12'x14')
- 287 vehicle parking spaces
- 65 trailer parking spaces
- LED warehouse lights, 2 per bay
- Whitebox warehouse
- Control joints caulked throughout

## Available Land

- ±5 acres stabilized yard or ±148 trailer parking available located at eastern end of park

**BUILDING 1 | ±258,204 SF**  
8702 FAIRBANKS N. HOUSTON RD.



### FOR LEASING INFORMATION, CONTACT

TYLER MANER | 817.877.1302 | tmaner@streamrealty.com  
 JEREMY LUMBREERAS, SIOR | 713.300.0322 | jlumbreeras@streamrealty.com  
 GARRET GEACONE | 713.300.0232 | garret.geacone@streamrealty.com





# FAIRBANKS

LOGISTICS PARK

**BUILDING 1 | ±258,204 SF**  
8702 FAIRBANKS N. HOUSTON RD.,  
HOUSTON, TX 77064

## AERIAL PHOTOS



Buildings 1 and 2



Buildings 3 and 4

**FOR LEASING INFORMATION, CONTACT**

TYLER MANER | 817.877.1302 | [tmaner@streamrealty.com](mailto:tmaner@streamrealty.com)  
JEREMY LUMBRERAS, SIOR | 713.300.0322 | [jlumbreras@streamrealty.com](mailto:jlumbreras@streamrealty.com)  
GARRET GEACONE | 713.300.0232 | [garret.geacone@streamrealty.com](mailto:garret.geacone@streamrealty.com)



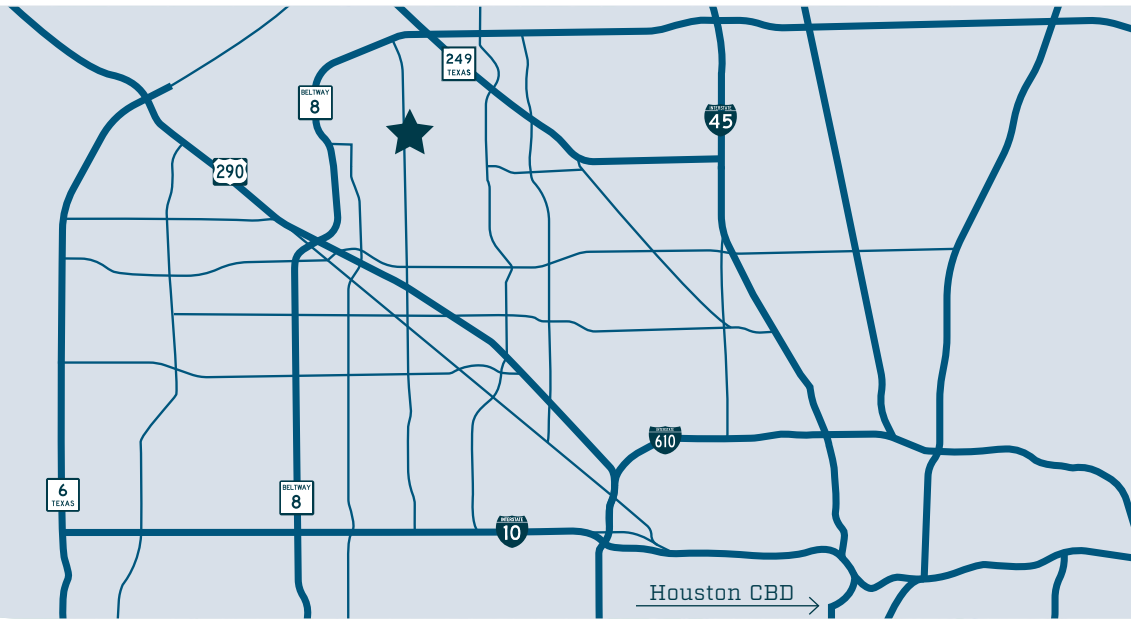


# FAIRBANKS

LOGISTICS PARK

**BUILDING 1 | ±258,204 SF**  
8702 FAIRBANKS N. HOUSTON RD.,  
HOUSTON, TX 77064

- ▲ BELTWAY 8 - 2.2 MILES
- ◀ HIGHWAY 249 - 3 MILES
- ▼ HIGHWAY 290 - 3.4 MILES
- ▼ I-610 - 9.5 MILES



**FOR LEASING INFORMATION, CONTACT**

TYLER MANER | 817.877.1302 | [tmaner@streamrealty.com](mailto:tmaner@streamrealty.com)  
JEREMY LUMBRERAS, SIOR | 713.300.0322 | [jlumbreras@streamrealty.com](mailto:jlumbreras@streamrealty.com)  
GARRET GEACONE | 713.300.0232 | [garret.geacone@streamrealty.com](mailto:garret.geacone@streamrealty.com)





# FAIRBANKS

## LOGISTICS PARK

**BUILDING 2 | ±244,128 SF**  
8710 FAIRBANKS N. HOUSTON RD.,  
HOUSTON, TX 77064



**FOR LEASING INFORMATION, CONTACT**

TYLER MANER | 817.877.1302 | [tmaner@streamrealty.com](mailto:tmaner@streamrealty.com)  
JEREMY LUMBRERAS, SIOR | 713.300.0322 | [jlumbreras@streamrealty.com](mailto:jlumbreras@streamrealty.com)  
GARRET GEACONE | 713.300.0232 | [garret.geaccone@streamrealty.com](mailto:garret.geaccone@streamrealty.com)





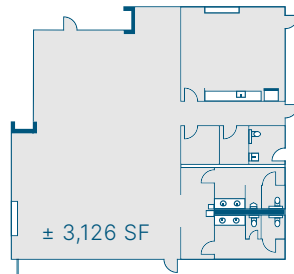
# FAIRBANKS LOGISTICS PARK

## Building Highlights

- ±244,128 SF
- ±3,126 SF spec office
- Front-load configuration
- 32' clear height
- 53'x52' column spacing
- 60' speed bay
- 220' building depth
- 1,112' building length
- 180' truck court
- 50 dock-high doors (9'x10')
- 4 grade level doors (12'x14')
- 248 vehicle parking spaces
- 47 trailer parking spaces
- LED warehouse lights, 2 per bay
- Whitebox warehouse
- Control joints caulked throughout

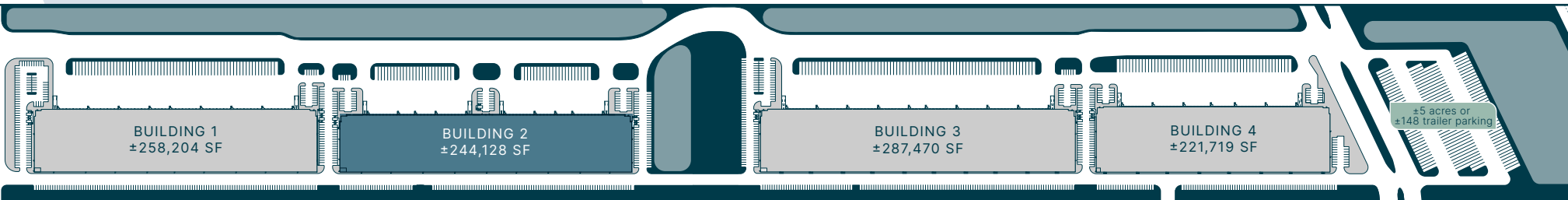
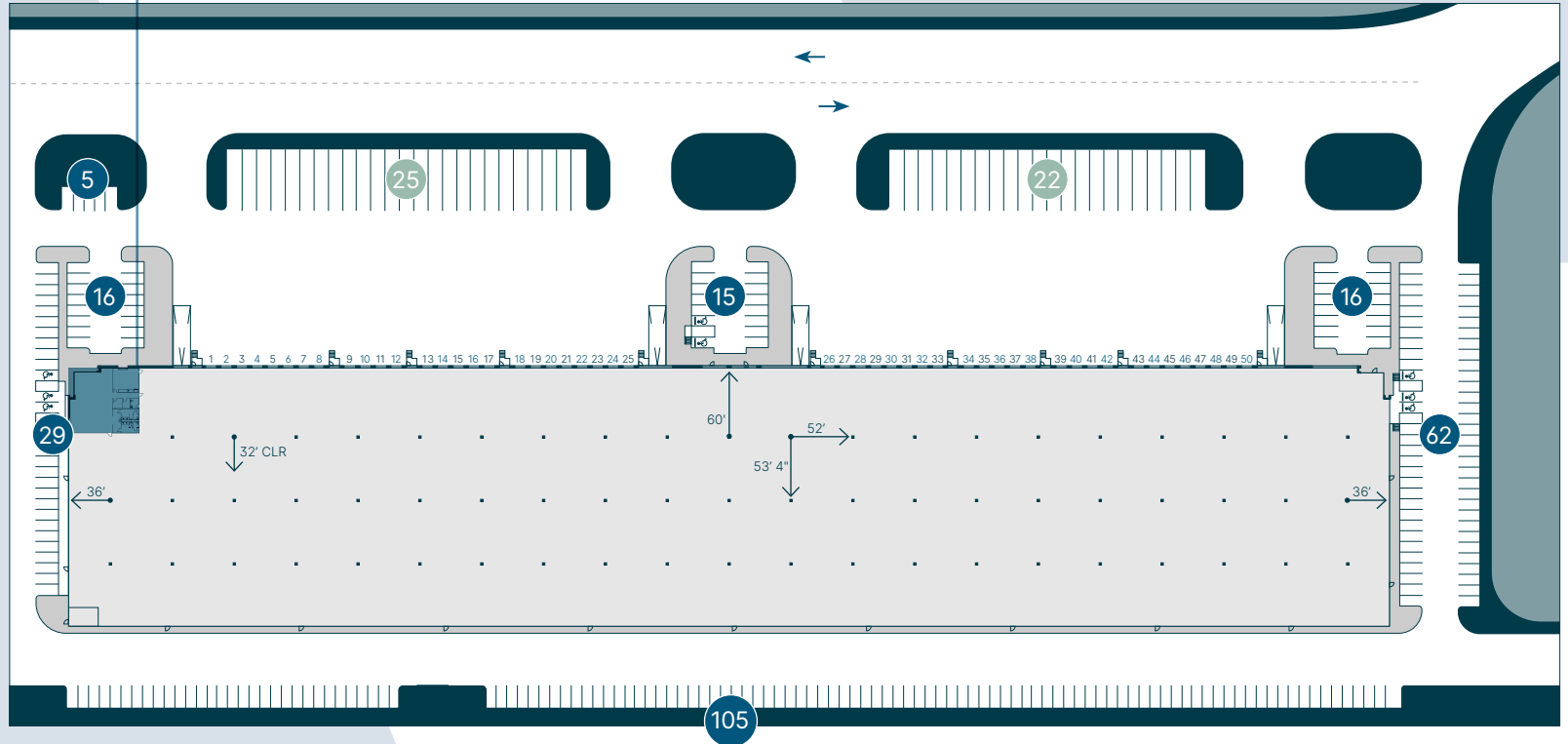
## Available Land

- ±5 acres stabilized yard or ±148 trailer parking available located at eastern end of park



**BUILDING 2 | ±244,128 SF**  
8710 FAIRBANKS N. HOUSTON RD.

**AUTO PARKING**  
**TRAILER PARKING**



### FOR LEASING INFORMATION, CONTACT

TYLER MANER | 817.877.1302 | tmaner@streamrealty.com  
JEREMY LUMBREAS, SIOR | 713.300.0322 | jlumbreas@streamrealty.com  
GARRET GEACONE | 713.300.0232 | garret.geacone@streamrealty.com





# FAIRBANKS

LOGISTICS PARK

**BUILDING 2 | ±244,128 SF**  
8710 FAIRBANKS N. HOUSTON RD.,  
HOUSTON, TX 77064

## AERIAL PHOTOS



Buildings 1 and 2



Buildings 3 and 4

**FOR LEASING INFORMATION, CONTACT**

TYLER MANER | 817.877.1302 | [tmaner@streamrealty.com](mailto:tmaner@streamrealty.com)  
JEREMY LUMBRERAS, SIOR | 713.300.0322 | [jlumbreras@streamrealty.com](mailto:jlumbreras@streamrealty.com)  
GARRET GEACONE | 713.300.0232 | [garret.geacone@streamrealty.com](mailto:garret.geacone@streamrealty.com)



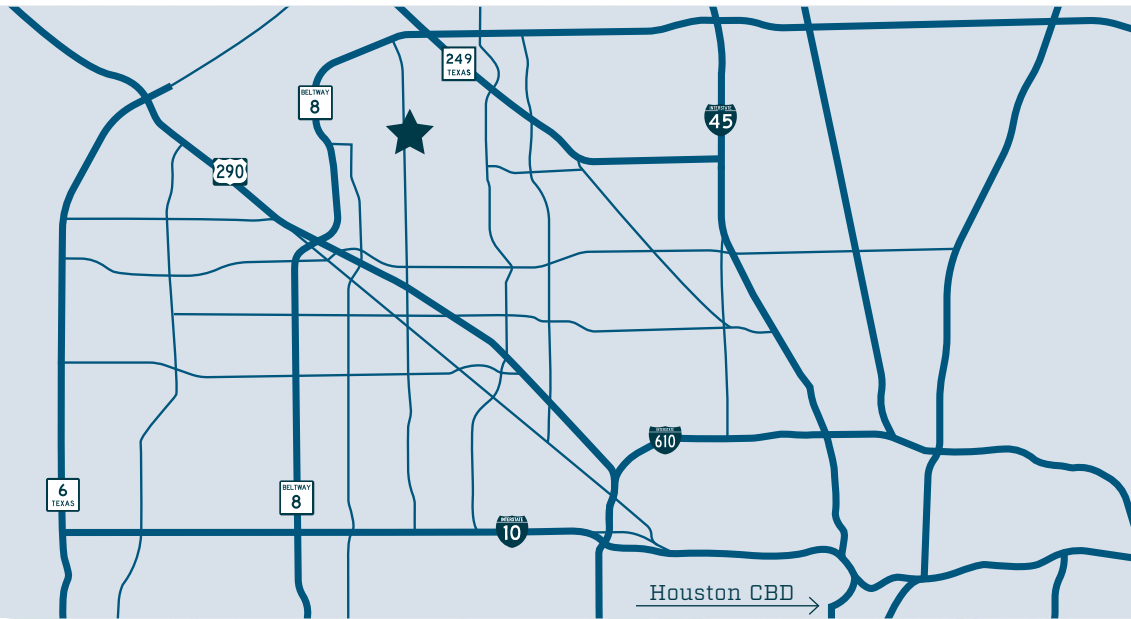


# FAIRBANKS

LOGISTICS PARK

**BUILDING 2 | ±244,128 SF**  
8710 FAIRBANKS N. HOUSTON RD.,  
HOUSTON, TX 77064

- ▲ BELTWAY 8 - 2.2 MILES
- ◀ HIGHWAY 249 - 3 MILES
- ▼ HIGHWAY 290 - 3.4 MILES
- ▼ I-610 - 9.5 MILES



**FOR LEASING INFORMATION, CONTACT**

TYLER MANER | 817.877.1302 | [tmaner@streamrealty.com](mailto:tmaner@streamrealty.com)  
JEREMY LUMBRERAS, SIOR | 713.300.0322 | [jlumbreras@streamrealty.com](mailto:jlumbreras@streamrealty.com)  
GARRET GEACONE | 713.300.0232 | [garret.geacone@streamrealty.com](mailto:garret.geacone@streamrealty.com)







# FAIRBANKS

LOGISTICS PARK

**BUILDING 3 | ±287,470 SF**  
8718 FAIRBANKS N. HOUSTON RD.,  
HOUSTON, TX 77064



**FOR LEASING INFORMATION, CONTACT**

TYLER MANER | 817.877.1302 | [tmaner@streamrealty.com](mailto:tmaner@streamrealty.com)  
JEREMY LUMBRERAS, SIOR | 713.300.0322 | [jlumbreras@streamrealty.com](mailto:jlumbreras@streamrealty.com)  
GARRET GEACONE | 713.300.0232 | [garret.geaccone@streamrealty.com](mailto:garret.geaccone@streamrealty.com)





# FAIRBANKS LOGISTICS PARK

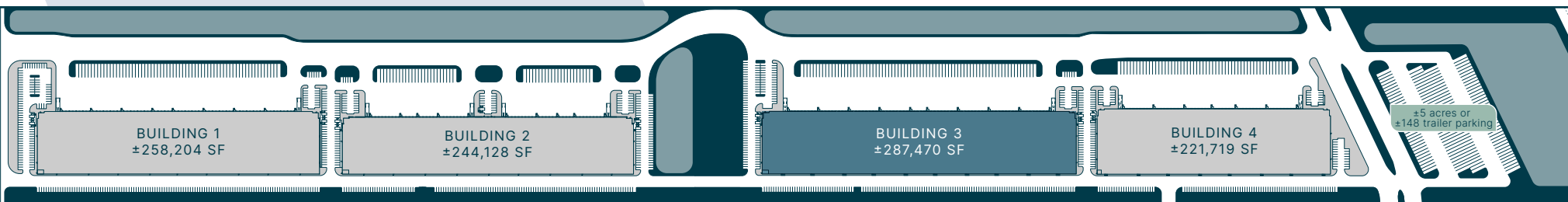
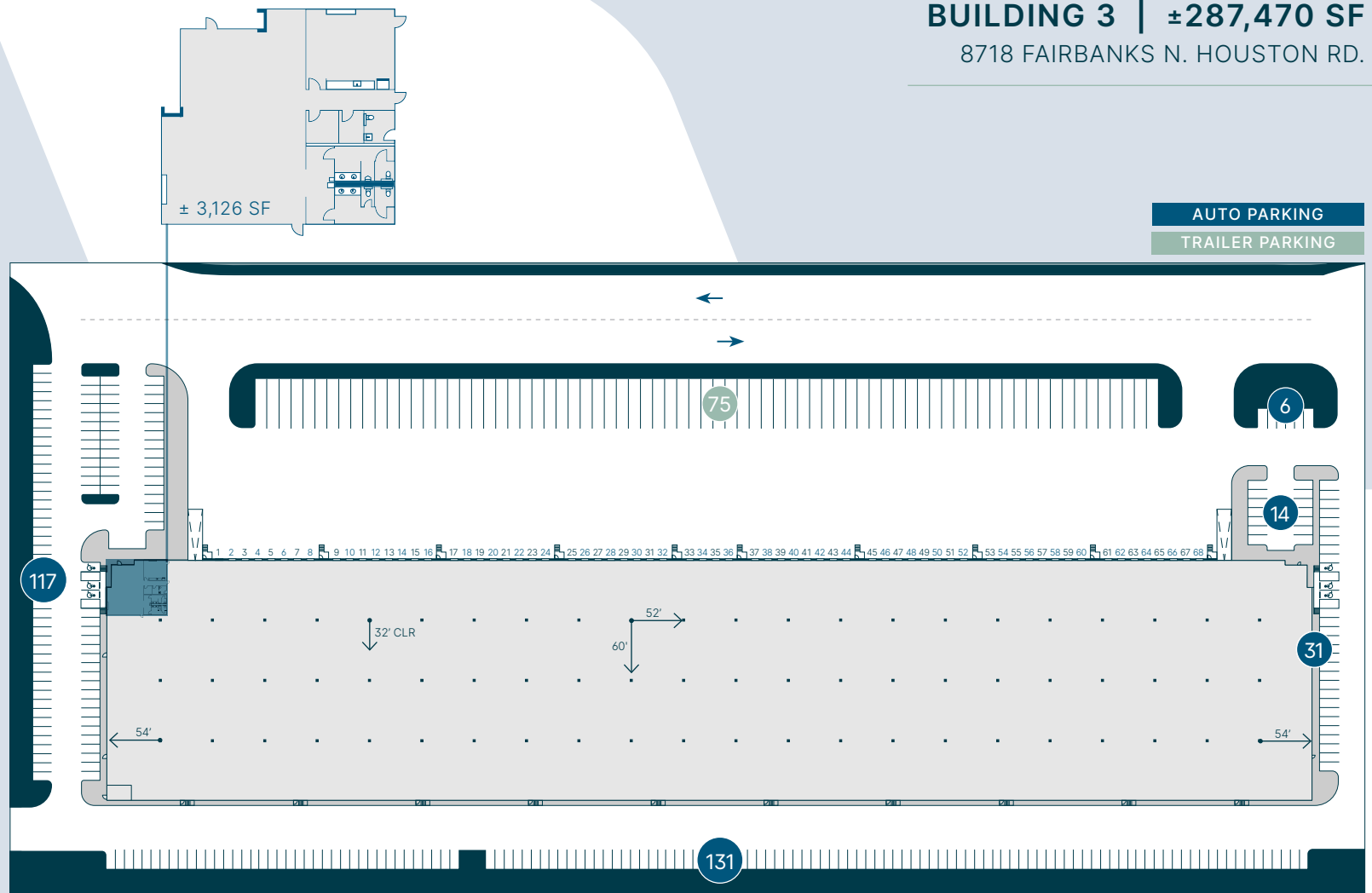
## Building Highlights

- ±287,470 SF
- ±3,126 SF spec office
- Front-load configuration
- 32' clear height
- 60'x52' column spacing
- 60' speed bay
- 240' building depth
- 1,200' building length
- 180' truck court
- 68 dock-high doors (9'x10')
- 2 grade level doors (12'x14')
- 299 vehicle parking spaces
- 75 trailer parking spaces
- LED warehouse lights, 2 per bay
- Whitebox warehouse
- Control joints caulked throughout

## Available Land

- ±5 acres stabilized yard or ±148 trailer parking available located at eastern end of park

**BUILDING 3 | ±287,470 SF**  
8718 FAIRBANKS N. HOUSTON RD.



## FOR LEASING INFORMATION, CONTACT

TYLER MANER | 817.877.1302 | tmaner@streamrealty.com  
 JEREMY LUMBRERAS, SIOR | 713.300.0322 | jlumbreras@streamrealty.com  
 GARRET GEACCONE | 713.300.0232 | garret.geaccone@streamrealty.com





# FAIRBANKS

LOGISTICS PARK

**BUILDING 3 | ±287,470 SF**  
8718 FAIRBANKS N. HOUSTON RD.,  
HOUSTON, TX 77064

## AERIAL PHOTOS



Buildings 1 and 2



Buildings 3 and 4

**FOR LEASING INFORMATION, CONTACT**

TYLER MANER | 817.877.1302 | [tmaner@streamrealty.com](mailto:tmaner@streamrealty.com)  
JEREMY LUMBRERAS, SIOR | 713.300.0322 | [jlumbreras@streamrealty.com](mailto:jlumbreras@streamrealty.com)  
GARRET GEACONE | 713.300.0232 | [garret.geacone@streamrealty.com](mailto:garret.geacone@streamrealty.com)



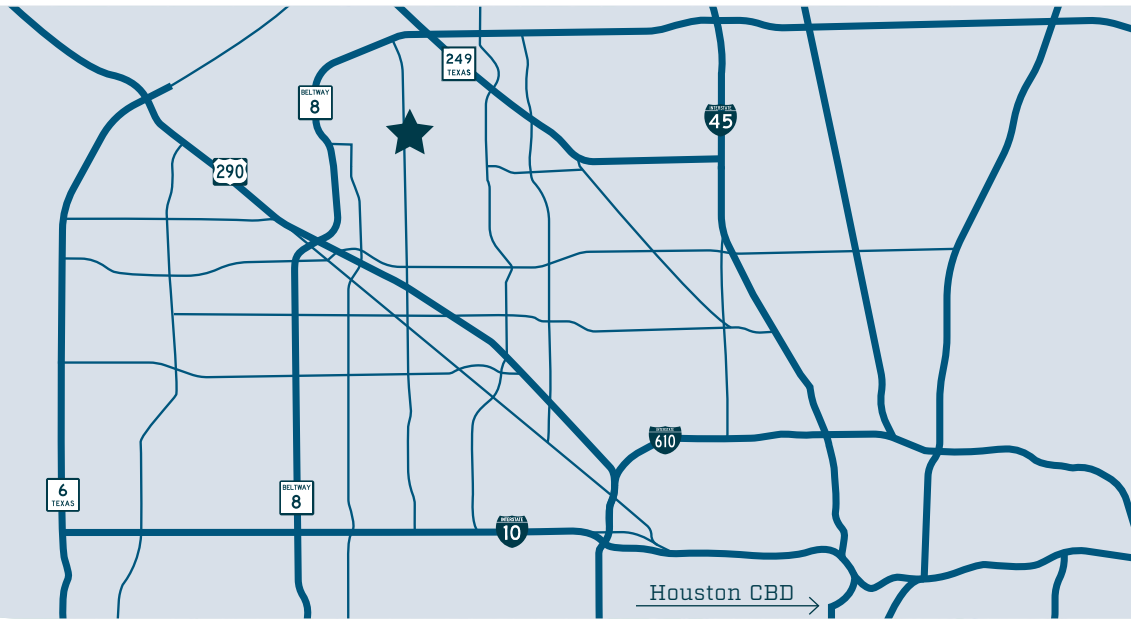


# FAIRBANKS

LOGISTICS PARK

**BUILDING 3 | ±287,470 SF**  
8718 FAIRBANKS N. HOUSTON RD.,  
HOUSTON, TX 77064

- ▲ BELTWAY 8 - 2.2 MILES
- ◀ HIGHWAY 249 - 3 MILES
- ▼ HIGHWAY 290 - 3.4 MILES
- ▼ I-610 - 9.5 MILES



**FOR LEASING INFORMATION, CONTACT**

TYLER MANER | 817.877.1302 | [tmaner@streamrealty.com](mailto:tmaner@streamrealty.com)  
JEREMY LUMBRERAS, SIOR | 713.300.0322 | [jlumbreras@streamrealty.com](mailto:jlumbreras@streamrealty.com)  
GARRET GEACONE | 713.300.0232 | [garret.geacone@streamrealty.com](mailto:garret.geacone@streamrealty.com)





# FAIRBANKS

## LOGISTICS PARK

**BUILDING 4 | ±221,719 SF**  
8726 FAIRBANKS N. HOUSTON RD.,  
HOUSTON, TX 77064



**FOR LEASING INFORMATION, CONTACT**

TYLER MANER | 817.877.1302 | [tmaner@streamrealty.com](mailto:tmaner@streamrealty.com)  
JEREMY LUMBRERAS, SIOR | 713.300.0322 | [jlumbreras@streamrealty.com](mailto:jlumbreras@streamrealty.com)  
GARRET GEACONE | 713.300.0232 | [garret.geacone@streamrealty.com](mailto:garret.geacone@streamrealty.com)





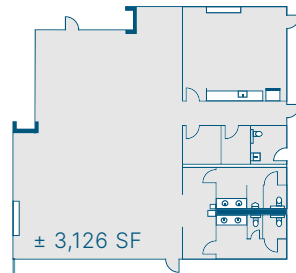
# FAIRBANKS LOGISTICS PARK

## Building Highlights

- 221,719 SF
- ±3,126 SF spec office
- Front-load configuration
- 32' clear height
- 47'6"x52' column spacing
- 60' speed bay
- 250' building depth
- 889' building length
- 180' truck court
- 47 dock-high doors (9'x10')
- 2 grade level doors (12'x14')
- 166 vehicle parking spaces
- 55 trailer parking spaces
- LED warehouse lights, 2 per bay
- Whitebox warehouse
- Control joints caulked throughout

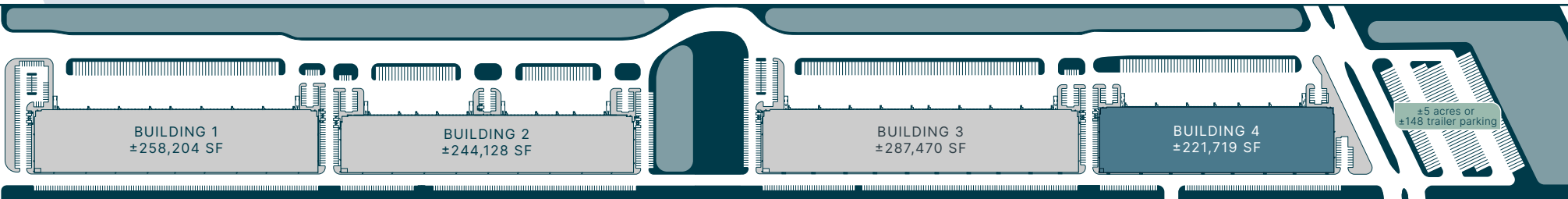
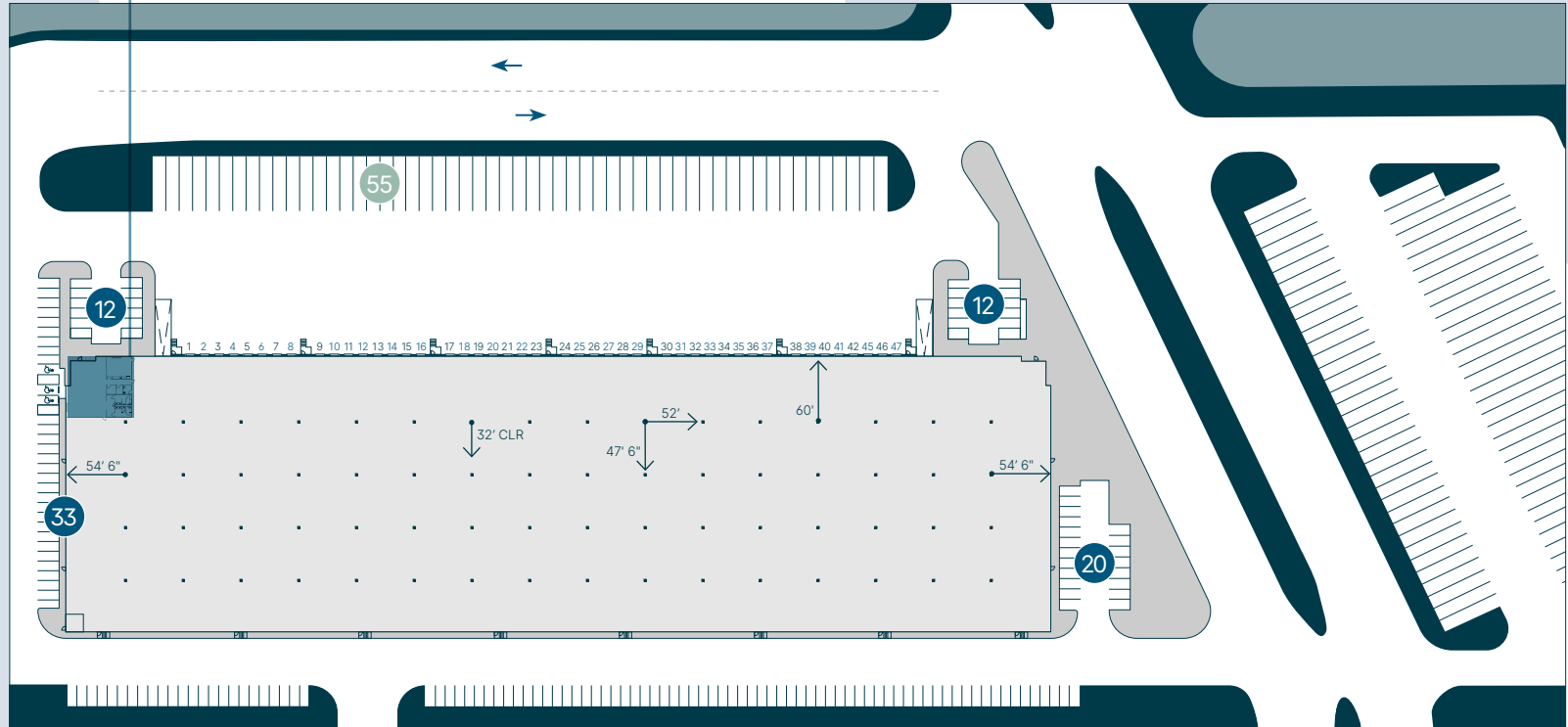
## Available Land

- ±5 acres stabilized yard or ±148 trailer parking available located at eastern end of park



**BUILDING 4 | ±221,719 SF**  
8726 FAIRBANKS N. HOUSTON RD.

**AUTO PARKING**  
**TRAILER PARKING**



### FOR LEASING INFORMATION, CONTACT

TYLER MANER | 817.877.1302 | tmaner@streamrealty.com  
 JEREMY LUMBREAS, SIOR | 713.300.0322 | jlumbreas@streamrealty.com  
 GARRET GEACONE | 713.300.0232 | garret.geacone@streamrealty.com





# FAIRBANKS

LOGISTICS PARK

**BUILDING 4** | ±221,719 SF  
8726 FAIRBANKS N. HOUSTON RD.,  
HOUSTON, TX 77064

## AERIAL PHOTOS



Buildings 1 and 2



Buildings 3 and 4

**FOR LEASING INFORMATION, CONTACT**

TYLER MANER | 817.877.1302 | [tmaner@streamrealty.com](mailto:tmaner@streamrealty.com)  
JEREMY LUMBRERAS, SIOR | 713.300.0322 | [jlumbreras@streamrealty.com](mailto:jlumbreras@streamrealty.com)  
GARRET GEACONE | 713.300.0232 | [garret.geacone@streamrealty.com](mailto:garret.geacone@streamrealty.com)



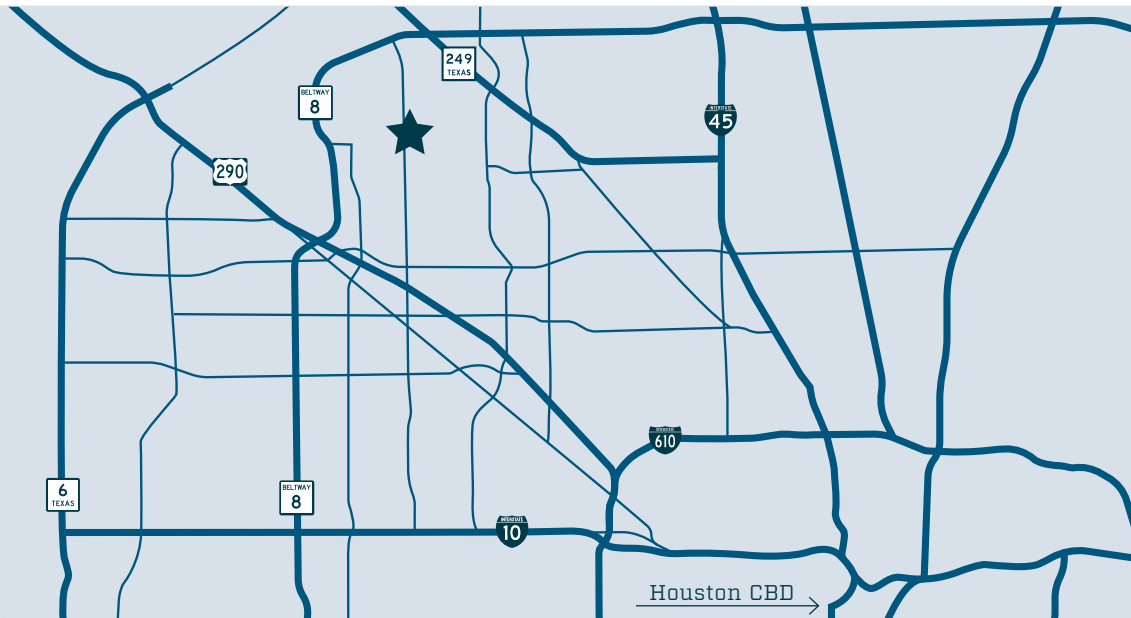


# FAIRBANKS

LOGISTICS PARK

**BUILDING 4 | ±221,719 SF**  
8726 FAIRBANKS N. HOUSTON RD.,  
HOUSTON, TX 77064

- ▲ BELTWAY 8 - 2.2 MILES
- ◀ HIGHWAY 249 - 3 MILES
- ▼ HIGHWAY 290 - 3.4 MILES
- ▼ I-610 - 9.5 MILES



**FOR LEASING INFORMATION, CONTACT**

TYLER MANER | 817.877.1302 | [tmaner@streamrealty.com](mailto:tmaner@streamrealty.com)  
JEREMY LUMBRERAS, SIOR | 713.300.0322 | [jlumbreras@streamrealty.com](mailto:jlumbreras@streamrealty.com)  
GARRET GEACONE | 713.300.0232 | [garret.geacone@streamrealty.com](mailto:garret.geacone@streamrealty.com)

