

# INDUSTRIAL MAINTENANCE BUILDING | TRUCK PARKING FOR LEASE

95-135 HERMIT SMITH ROAD  
APOPKA, FL 32703



## PROPERTY HIGHLIGHTS

### 135 HERMIT SMITH ROAD

**Building Size:** 9,000± SF

**Doors:** Three (3) drive in doors

**Land Size:** 7.23 Acres

**Use:** Truck Parking

### 95 HERMIT SMITH ROAD

**Land Size:** 5.04 Acres

**Use:** Truck Parking

**TOTAL LAND SIZE:** 12.27 Acres

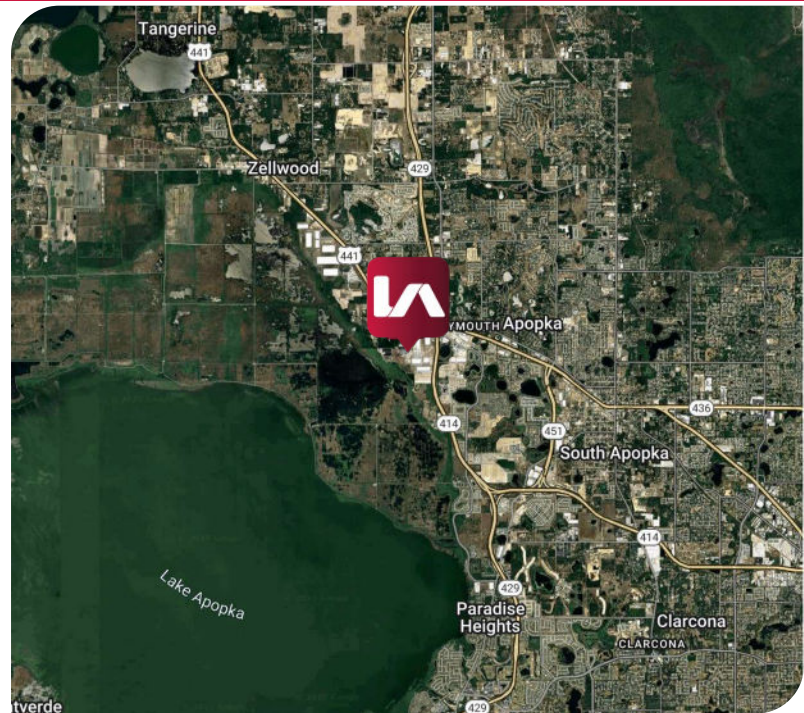
### LEASE RATES:

\$55,000/MTH 7.23 Acres

\$30,000/MTH 5.04 Acres

\$70,000/MTH Together

**Monthly Approximate Op Ex:** \$11,135/MTH



### Leasing Contacts:

Christopher "CJ" Griffith, SIOR  
Vice President  
cgriffith@lee-associates.com  
D 321.281.8508

Ryan Griffith  
Vice President  
rgriffith@lee-associates.com  
D 321.281.8512

**INDUSTRIAL BUILDING & TRUCK PARKING**  
**95-135 HERMIT SMITH ROAD**  
APOPKA, FL 32703



Leasing Contacts:

Christopher "CJ" Griffith, SIOR  
Vice President  
cgriffith@lee-associates.com  
D 321.281.8508

Ryan Griffith  
Vice President  
rgriffith@lee-associates.com  
D 321.281.8512

All information furnished regarding property for sale, rental or financing is from sources deemed reliable, but no warranty or representation is made to the accuracy thereof and same is submitted to errors, omissions, change of price, rental or other conditions prior to sale, lease or financing or withdrawal without notice. No liability of any kind is to be imposed on the broker herein.

